

Resonant Capacitor C44



Characteristics

- Plastic packaging , epoxy resin filling
- Lead by the tinned copper nut, small size and convenient installation.
- High frequency and high current endurance.
- Low ESL and ESR
- High pulse current, high dv/dt endurance and good stability.self healing

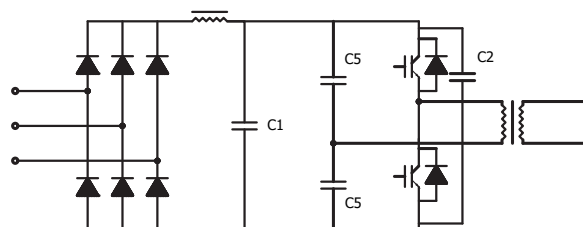
Application

- Widely used in series circuits or parallel resonant circuits of power electronic devices.
- Welding power supplies, induction heating equipment in resonance occasions.

Technical Data

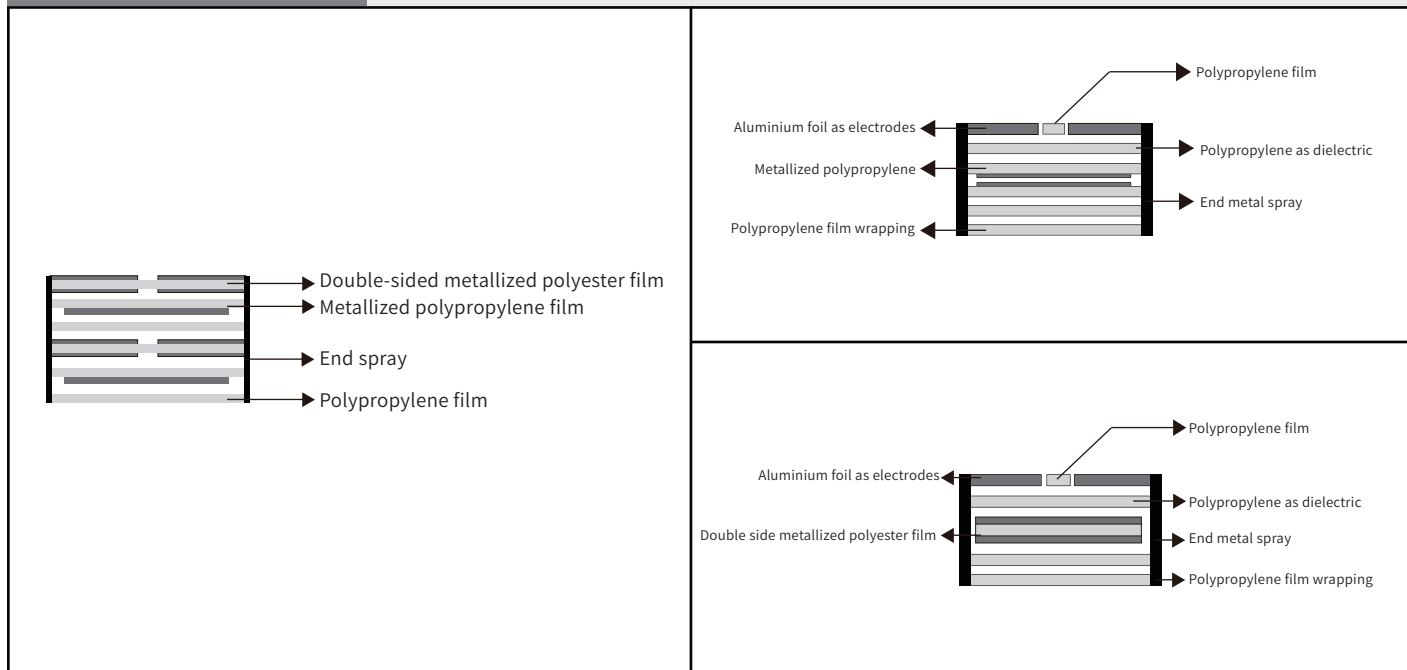
• Reference Standard	IEC61071 .IEC60110
• Operating Temperature Range	-40°C~+85°C Tmax+105°C(highest temp. +105°C)
• Capacitance Range	1μF ~7.0μF
• Rated Voltage	1200VDC~2000VDC
• Capacitance Tolerance	±5%(J); ±10%(K)
• Withstand Voltage	1.5Un DC/10S
• Dissipation Ractor	$tg\delta \leq 0.0010$ f=10KHz at 20°C
• Insulation Resistance	$R_s C \geq 5000S$ (at20°C 100VDC 60S)
• Flame Fetardation	UL94V-0
• Life Expectancy	100000hrs (Un θhotspot ≤ 70°C)

Typical Circuit

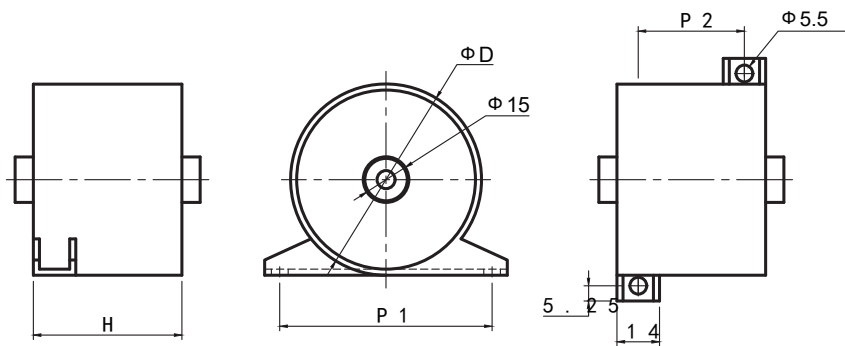


C5 is resonant capacitor in the resonant circuit.

Construction Diagram



Product Shape

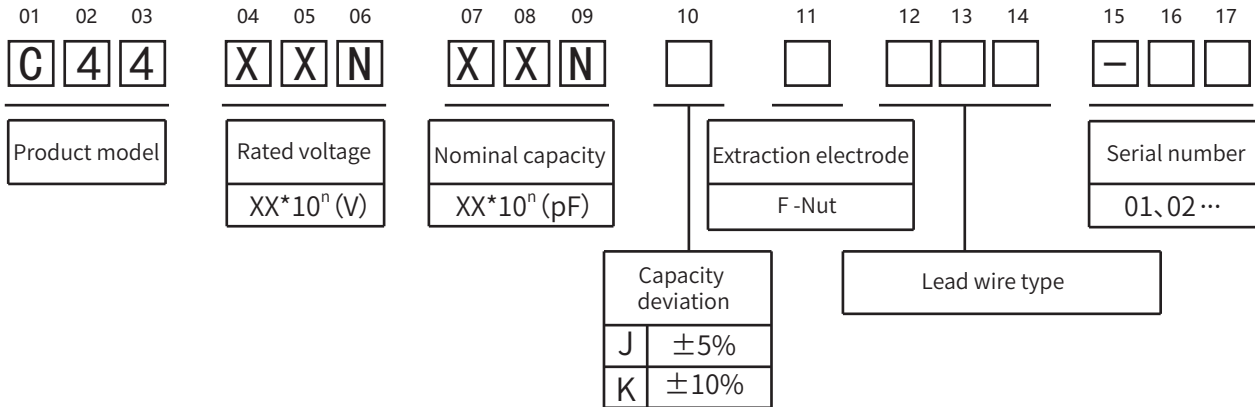


ΦD (mm)	H(mm)	P (mm)	P \varnothing (mm)
5 0	6 0	4 6	5 8
6 3	5 0	3 6	7 0
7 6	5 0	3 6	8 2

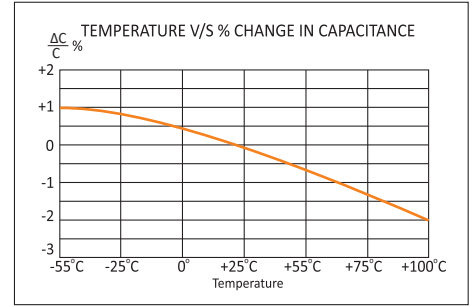
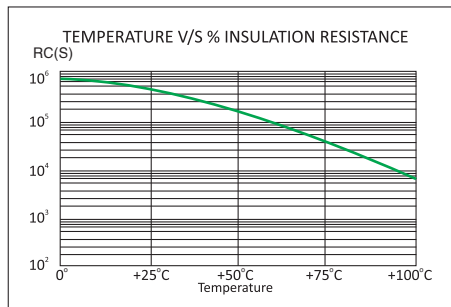
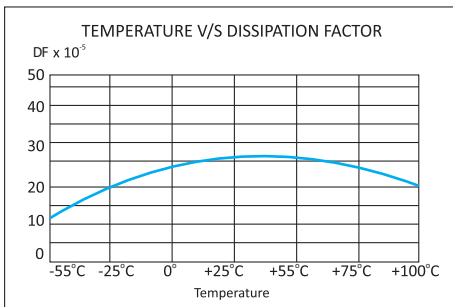
C44

Resonant Capacitor

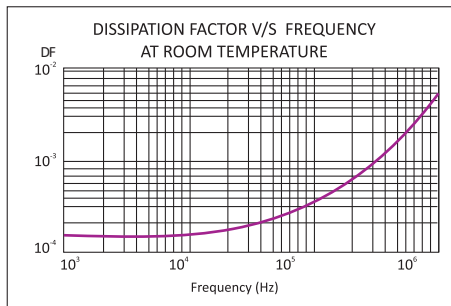
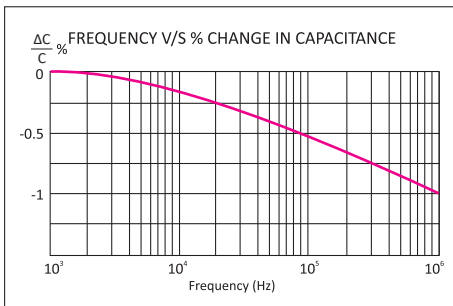
Product Coding



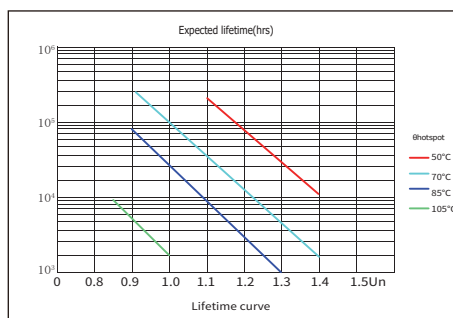
Frequency Characteristics



Temperature Characteristics



Life Expectancy



Article Table

Part Number	CAP μF	Dimension (mm)		dv/dt (V/μs)	Ipeak (A)	Irms @100KHz40°C (A)	ESL (nH)	ESR @100KHz20°C (mΩ)	Qn (kVar)
		L	D						
U _N 1200VDC Urms 500VAC									
C44501205JFJ01M6-01	2.0	50	63	500	1000	60	20	3.2	27.0
C44501305JFJ01M6-01	3.0	50	63	500	1500	65	22	3.0	29.2
C44501405JFJ01M6-01	4.0	50	63	400	1600	70	22	2.8	31.5
C44501505JFJ01M6-01	5.0	50	63	400	2000	75	23	2.5	33.7
C44501605JFJ01M6-01	6.0	50	76	350	2100	85	25	2.0	38.2
C44501705JFJ01M6-01	7.0	50	76	300	2100	90	25	1.5	40.5
U _N 1600VDC Urms 600VAC									
C44601205JFJ01M6-01	2.0	50	63	700	1400	60	20	3.2	32.4
C44601305JFJ01M6-01	3.0	50	63	600	1800	65	22	3.0	35.1
C44601405JFJ01M6-01	4.0	50	63	550	2200	70	22	2.8	37.8
C44601505JFJ01M6-01	5.0	50	76	500	2500	80	23	2.3	43.2
C44601605JFJ01M6-01	6.0	50	76	450	2700	85	25	2.2	45.9
U _N 2000VDC Urms 700VAC									
C44601205JFJ01M6-01	2.0	50	63	800	1600	60	20	3.2	37.8
C44601305JFJ01M6-01	3.0	50	63	700	2100	65	22	3.0	40.9
C44601405JFJ01M6-01	4.0	50	76	600	2400	75	22	2.5	47.2

The above table / graphics are for reference only, subject to the actual product (unit: mm)
 Note: Maximum Irms current at 100kHz, Tamb=70°C ΔT≤15°C.